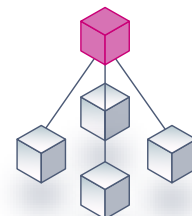


SafeCom G3 server software



Control and optimize your printer environment

Large enterprises worldwide have experienced the cost reducing benefits of SafeCom Smart Printing™. Most importantly, the SafeCom solution enables enterprises to effectively consolidate their printing infrastructure, simplify management, improve support and reduce operational costs. Additionally, SafeCom provides failover and Disaster Recovery packages with backup and restore functionality site-tuned to each installation's requirements.

The main functionality of the SafeCom Smart Printing™ universe:

- **Central Administration** of users and devices optimizes operations
- **Document Accounting** tracks and controls print, copy, fax, e-mail and scan activities
- **Secure Printing** protects output and devices, and ensures confidentiality
- **Policy Enforcement** motivates changes in user behaviour and reduces waste

SafeCom Server - robust and scalable

The SafeCom Server software is the heart of every SafeCom solution. It contains the main printer control intelligence and provides the tools to efficiently manage your printing environment. SafeCom Server software is designed and built for reliable, stable performance along with consistently high availability. Many enterprise installations today already benefit from SafeCom's suite of APIs for easy integration of their print solution into existing document systems, ERP and other applications. Up-to-date failover technology can also be added to your SafeCom solution.

Small and midsize companies - up to 200 connected printers

The SafeCom Single-Server software is designed for small to midsize companies in one location. A general guideline for its capacity is 2 million printed pages per month or 200 connected printers.

SafeCom Enterprise Server - from 200 connected printers

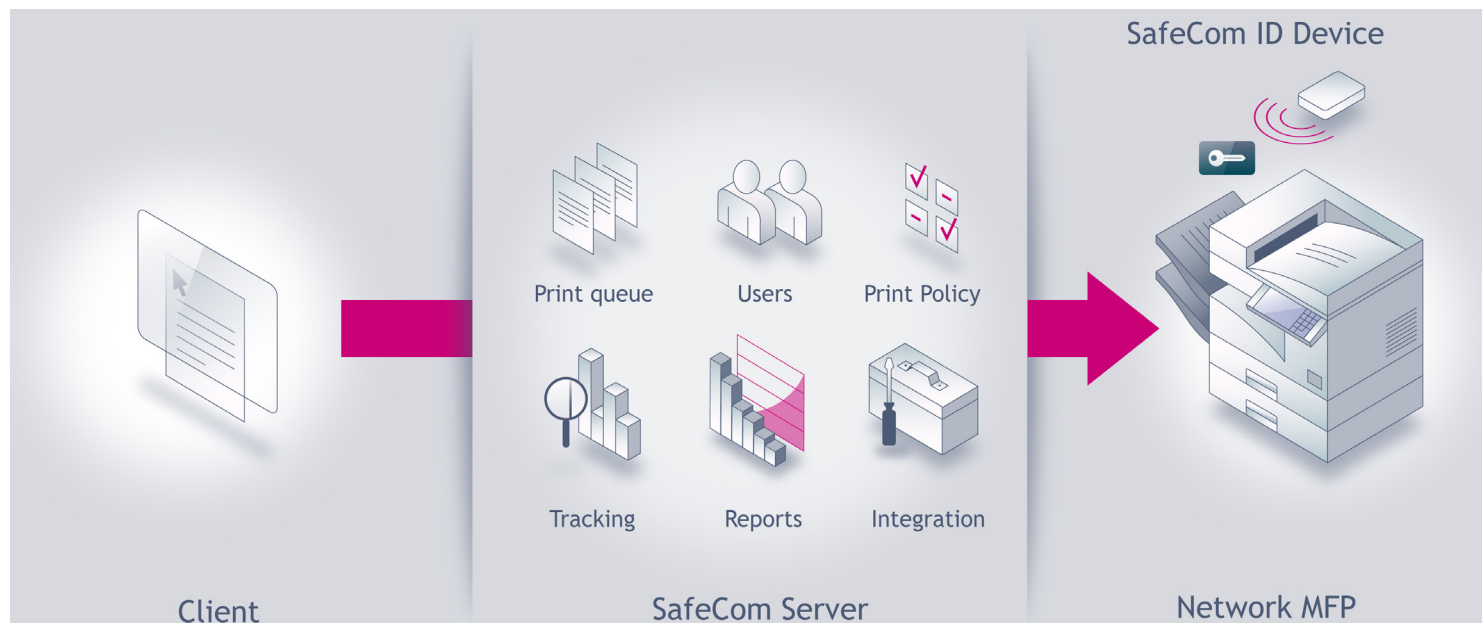
The SafeCom Enterprise Server software is designed for large organizations that typically need to service large print volumes, thousands of users, hundreds of printers, numerous print servers and offices at geographically remote sites. The SafeCom solution controls the entire printing environment through a single master server providing the company with all the benefits of central print administration.

SafeCom Branch Functionality - add remote sites

Network bandwidth is often a barrier to the central administration of printers in remote sites. With a SafeCom solution companies can minimize the need for network capacity locally since only control data travels over the corporate network. Pending documents are stored locally on the user's computer until the user authenticates and collects the print job at the local printer. Only login and tracking information is sent to the SafeCom server.

SafeCom Cluster Server - improved availability

The SafeCom Cluster Server software is an add-on module that enables a highly reliable and robust printing solution through the use of the Microsoft Cluster Service. A cluster solution consists of "nodes" that back each other up in case of server breakdowns, so users never experience breaches in printer availability.



Any SafeCom-enabled network MFP or printer combined with the SafeCom Server and a SafeCom ID Device enables the central management and control of all print, copy, scan, fax and e-mail activities. Users send their print and then authenticate at any company MFP or printer to retrieve it.

SafeCom G3 server

The SafeCom Smart Printing™ solution is modular and can be configured and scaled to meet the requirements of any size of organization. SafeCom Smart Printing™ features:

- Easy installation and administration
- Simplified setup of printers and print queues
- System overview with easy access to frequently used features
- Quota and fee-based printing and copying solution
- Global solution with Unicode support
- Flexible design with possibility to store pending documents on user's computer or central servers
- Reduce the number of print servers
- Minimize need for critical network bandwidth with branch functionality
- SafeCom Web Interface allows users to delete or retain documents through a web browser.

SafeCom Products

SafeCom Print Tracker - Gain Insight and Optimized Print Costs

The SafeCom Print Tracker is a central print management tool that registers all print activities in the organization. It allows for central control of users and devices, and the enforcement of print policies, such as optimizing duplex and color printing.

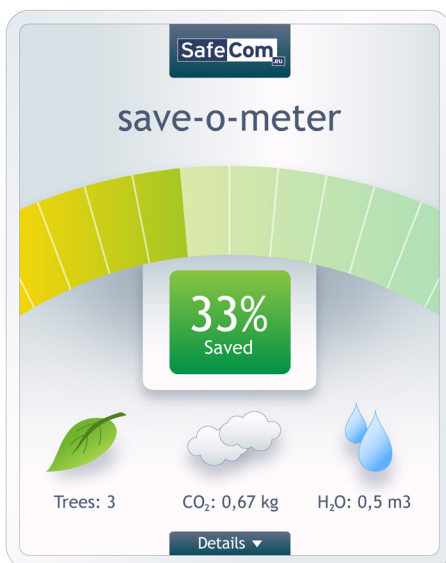
SafeCom Go - Secure Printing and Access Control

SafeCom Go is a vendor specific solution that integrates with the MFP's user interface. It enables secure printing and controls access to print, copy, scan, fax and e-mail activities. Users send their print and then log in at any company printer to collect documents. SafeCom Go is available for:

- Canon
- HP
- Konica Minolta
- Lexmark
- Océ
- Ricoh/NRG
- Sharp
- Xerox

SafeCom Controller - Connect any Printer

SafeCom Controller is the vendor independent solution that integrates with any networked printer or MFP. Printers and MFPs can be SafeCom-enabled with the SafeCom Controller and a stand-alone card reader or SafeCom Color Front-end (color touch-screen with built-in card reader).

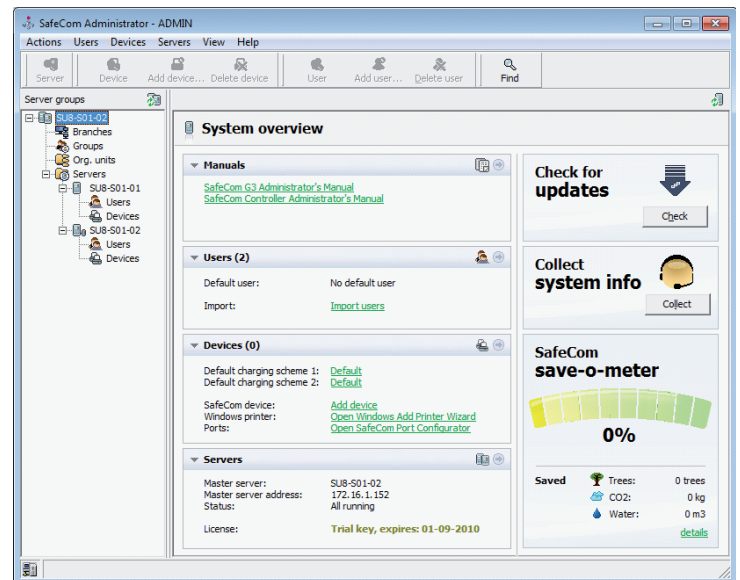


The SafeCom Save-O-Meter gives an instant overview of environmental savings and saved consumables.

SafeCom Administrator - central administration and cost control

The SafeCom Administrator allows your IT staff to centrally manage and control the entire printing environment, i.e., its users, printers, and MFPs. This allows your staff to support all the company's print queues, remove cancelled jobs or troubleshoot remote sites from their central location. In addition they can set up rules and policies to reduce waste.

Many operations can be set for automatic processing, such as deletion of old jobs and status reporting. Companies can scale down their many printer queues, or even create a single queue for all printers, thereby simplifying administration and support and raising help-desk efficiency.



The SafeCom Administrator is the central control centre. It provides the tools to proactively manage and control your print environment.

System Requirements

A SafeCom solution requires software to be installed on a Windows server. Setup can be limited to adding or modifying one or more shared printers.

Server

Windows 2008 and 2003 SP1.

Virtualization software, such as VMware and Microsoft Virtual Server, is supported as long as it supports Windows.

1.4 GHz CPU (recommended 2 GHz or faster) and 2 GB RAM or greater. 5 GB of free disk space or more depending on print volume.

Web Interface

Internet Information Service (IIS) version 7.0, 6.0 or 5.1.

Database

Microsoft SQL Server 2008 R2 Express is distributed with the software and requires Microsoft Net Framework 3.5 SP1 and Windows Installer 4.5.

In a SafeCom multi server installation the master server must run Microsoft SQL Server 2008, 2005 or 2000.

Client

Windows 7, Windows Vista, Windows XP SP2, 2008, 2003, 2000, and clients running Citrix and Windows Terminal Service 1 GHz CPU and 1 GB RAM or greater (minimum 2 GB RAM if 64-bit).

June 2010, 1.0

SafeCom, SafeCom Go, SafeCom P:Go, SafeCom ePay and the SafeCom logo are trademarks of SafeCom a/s. All other brands and product names are trademarks of their respective holders. SafeCom a/s cannot be held responsible for any technical or typographical errors and reserves the right to make changes to products and documentation without prior notice. SafeCom has received the following British patent GB 2350 713 B, US patent US 6,952,780 B2 and Europe EUR EP1 120 701.

SafeCom.eu